

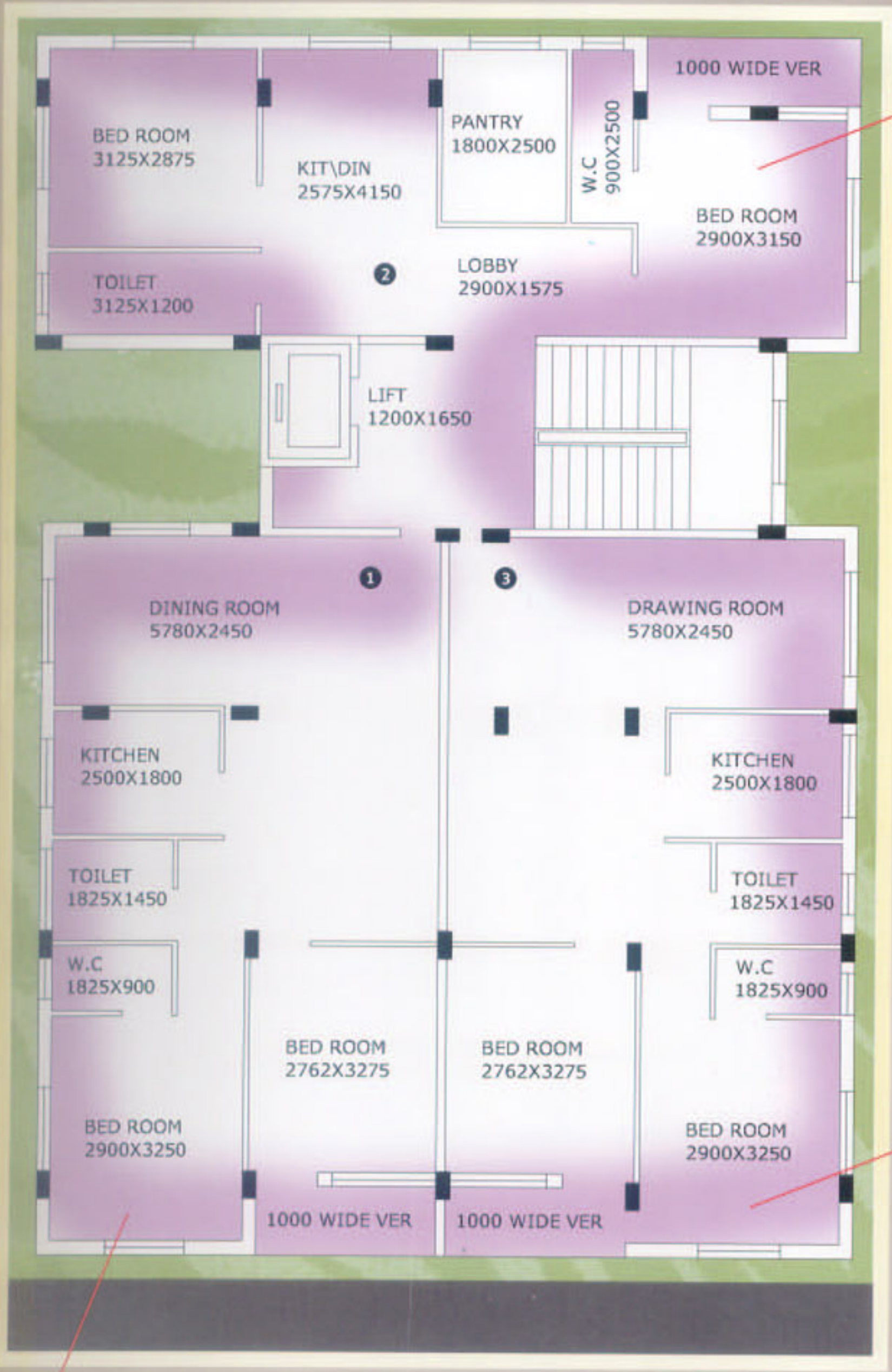
MAYFAIR NORTH END

296 NAYABAD

The specifications of the building are good enough to write about home

<i>Structure</i>	: RCC Frame	<i>Doors</i>	: Sal wood frame Main door Polished wooden panel type, Other doors will be flush door
<i>Walls</i>	: First Class Bricks with plaster of Paris on all walls	<i>Windows</i>	: Wooden window
<i>Flooring</i>	: Marble Flooring in all rooms, Living/Dining, Toilet, Kitchen and Balcony	<i>Electricals</i>	: Concealed Electrical wiring with adequate points /modular switches
<i>Kitchen</i>	: One marble slab for cooking platform with 3ft glazed tiles above it and one stainless steel sink	<i>Facilities</i>	: Lift
<i>Toilet</i>	: Standard glazed tiles up to 6 ft on walls. Sanitaryware ceramic white of ISI standard, CP fittings of ISI brand. Hot and cold water provision in common toilet	<i>Water supply</i>	: 24 hrs.
		<i>Exterior</i>	: Apex coating
		<i>Amenities</i>	: Car parking space at extra cost

Developers : MAYFAIR VILLA PVT. LTD.



875 Sqft

1000 Sqft

1000 Sqft

