

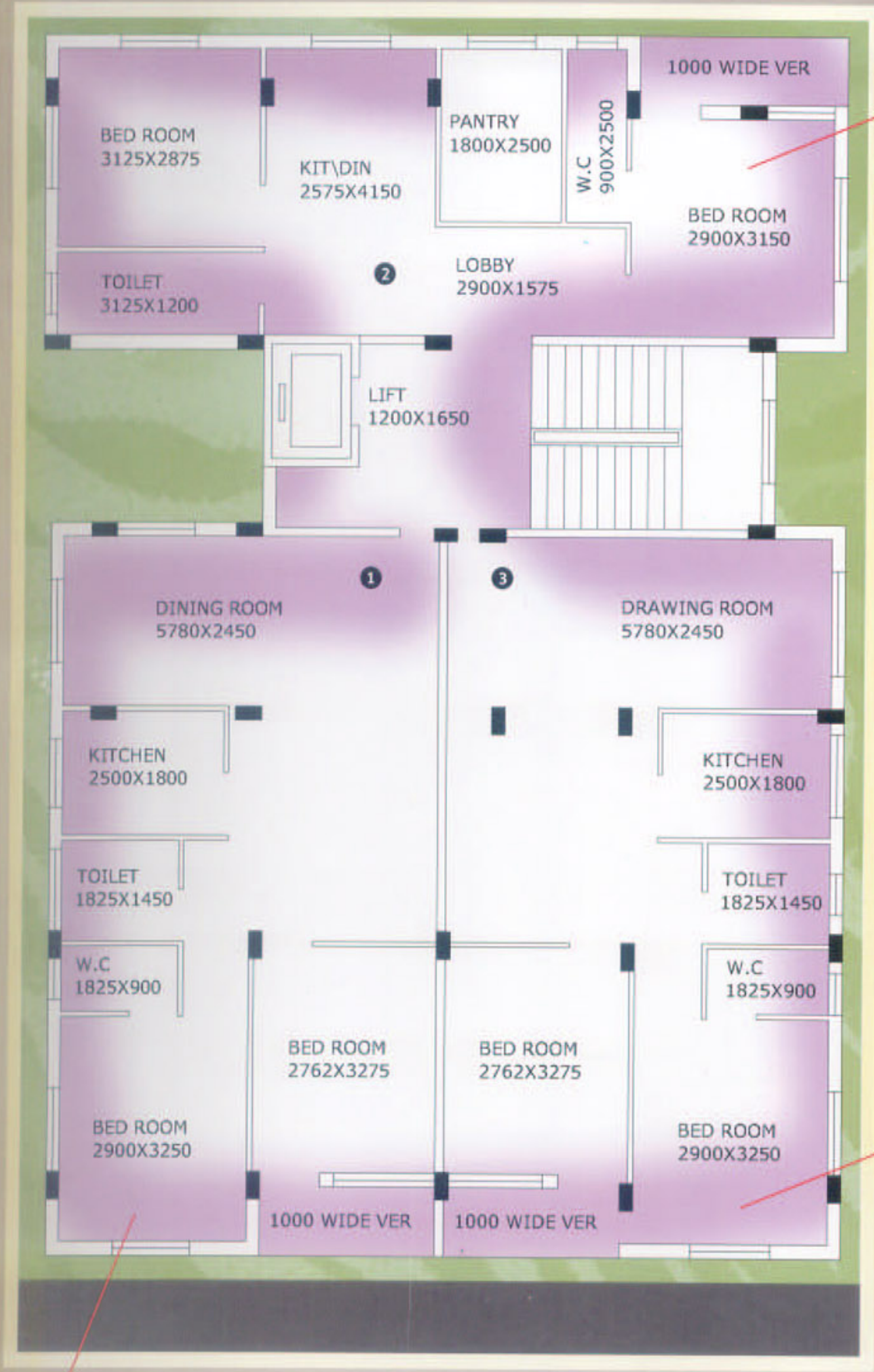
MAYFAIR NORTH END

296 NAYABAD

The specifications of the building are good enough to write about home

<i>Structure</i>	<i>: RCC Frame</i>	<i>Doors</i>	<i>: Sal wood frame Main door Polished wooden panel type, Other doors will be flush door</i>
<i>Walls</i>	<i>: First Class Bricks with plaster of Paris on all walls</i>	<i>Windows</i>	<i>: Wooden window</i>
<i>Flooring</i>	<i>: Marble Flooring in all rooms, Living/Dining, Toilet, Kitchen and Balcony</i>	<i>Electricals</i>	<i>: Concealed Electrical wiring with adequate points /modular switches</i>
<i>Kitchen</i>	<i>: One marble slab for cooking platform with 3ft glazed tiles above it and one stainless steel sink</i>	<i>Facilities</i>	<i>: Lift</i>
<i>Toilet</i>	<i>: Standard glazed tiles up to 6 ft on walls. Sanitaryware ceramic white of ISI standard, CP fittings of ISI brand. Hot and cold water provision in common toilet</i>	<i>Water supply</i>	<i>: 24 hrs.</i>
		<i>Exterior</i>	<i>: Apex coating</i>
		<i>Amenities</i>	<i>: Car parking space at extra cost</i>

Developers: MAYFAIR VILLA PVT. LTD.



875 Sqft

1000 Sqft

1000 Sqft

